

Artisan Stone Deck Oven

MODEL: 3T Series



CAPACITY (Per Deck)

- 6 Half Size Sheet Pans (13" x 18" - 30mm x 457mm)
- 3 Full Size Sheet Pans (18" x 26" - 457 mm x 660 mm)

ELECTRICAL SYSTEM

1 Phase 50/60 HZ, 2 wires (ground wire not included)

3T1	208V	5 Kw	40 A
	240V	5 Kw	35 A
3T2	208V	10 Kw	80 A
	240V	10 Kw	70 A
3T3	208V	15 Kw	120 A
	240V	15 Kw	115 A
3T4	208V	20 Kw	160 A
	240V	20 Kw	140 A

3 Phases 50/60 HZ, 3 wires (ground wire not included)

3T1	208V	5 Kw	23 A
	240V	5 Kw	20 A
	480V	5 Kw	10 A
3T2	208V	10 Kw	46 A
	240V	10 Kw	40 A
	480V	10 Kw	20 A
3T3	208V	15 Kw	69 A
	240V	15 Kw	60 A
	480V	15 Kw	30 A
3T4	208V	20 Kw	92 A
	240V	20 Kw	80 A
	480V	20 Kw	40 A

Optional Proofer (Ground Wire not Included):

- 208V - 7.8A - 1.6 kW - 50/60 Hz - 2 wires
- 240V - 9A - 2.2 kW - 50/60 Hz - 2 wires
- 480V - 4.1A - 2.2 kW - 50/60 Hz - 2 wires

STANDARD PRODUCT WARRANTY

One Year Labor & Two Year Parts

FEATURES & BENEFITS

- Intuitive Programmable Control per Chamber
- 600°F Max Bake Temperature
- 1" (25 mm) Refractory Stone Deck
- Stainless steel construction
- Independent Shot Steam Per Deck
- Single Electrical, Drain, & Water Connections
- Fully Insulated & Illuminated
- Retracting Doors (Saving Space When Loading & Unloading)
- Independent Temperature Control for Upper & Lower Deck Elements
- Two Year Parts and One Year Labor Warranty

OPTIONS & ACCESSORIES

- Water Filter (50-1530)
- Standard Proofer for 1 - 2 Decks (ES2T)
- Low Profile Proofer for 3 Decks (ES2TP)
- Stainless Steel Deck
- Non-Functional Eyebrow Canopy (EH2T)
- Modular Shipping
- Loaf Loader (LL)
- Single Phase Electrical
- 380-415V electrical configuration

WATER & DRAIN CONNECTION

Water: 1/4"

Drain: 1/2"

FINISH

Stainless Steel

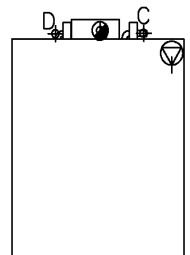
MINIMUM CLEARANCES

1" (25 mm) Side & Back

6" (153 mm) Top

PLEASE NOTE:

- One single electrical, drain, water connection. Multiple decks are inter connected
- Electrical inlet located at the back on top right hand corner
- For Steam Efficiency minimum water inlet pressure 50 PSI
- To prevent steam system scale issue install water softener rated for a minimum of 3 GPM



SHORT SPECIFICATION

Artisanal Stone Deck Oven, Electric, 1 Chamber, Programmable Control per Chamber, Individual Shot Steam per Chamber, One Piece Shipment Standard, Single Electrical Connection, Single Water & Drain Connection, Stainless Steel Construction, 1" Thick Refractory Stone, Standard with Heavy Duty Legs with Casters, Ecomode Programming—Helps Saving Energy, 8.3 kW (Total), One year labor & two year parts warranty

DIMENSIONS & SHIPPING WEIGHT

To calculate the total height of your artisan deck oven please follow each of the below worksheet. Please note that the artisan deck oven can not exceed the total height of 78" to fit under any required standard hood system:

1. Optional Eyebrow Canopy



Dimensions: 5" H (128mm) x 73"W (1854mm) x 46 1/2" D (1181mm)

2. Top Cover Plate



Dimensions: 2 1/2" H (64mm) x 73"W (1854mm) x 46 1/2" D (1181mm)

3. Deck Choice #1 - 6" Internal Chamber Height



Exterior Dimensions: 13 5/8" H (347mm) x 73"W (1854mm) x 46 1/2" D (1181mm)

Interior Dimensions: 6" H (153mm) x 56"W (1420mm) x 30" D (762mm)

4. Deck Choice #2 - 8" Internal Chamber Height



Exterior Dimensions: 15 5/8" H (397mm) x 73"W (1854mm) x 46 1/2" D (1181mm)

Interior Dimensions: 8" H (203mm) x 56"W (1420mm) x 30" D (762mm)

5. Deck Choice #3 - 10" Internal Chamber Height



Exterior Dimensions: 17 5/8" H (447mm) x 73"W (1854mm) x 46 1/2" D (1181mm)

Interior Dimensions: 10" H (253mm) x 56"W (1420mm) x 30" D (762mm)

6. Deck Choice #4 - 12" Internal Chamber Height



Exterior Dimensions: 19 5/8" H (497mm) x 73"W (1854mm) x 46 1/2" D (1181mm)

Interior Dimensions: 12" H (303mm) x 56"W (1420mm) x 30" D (762mm)

7. Base Plate



Dimensions:

2 1/2" H (64mm) x 73"W (1854mm) x 46 1/2" D (1181mm)

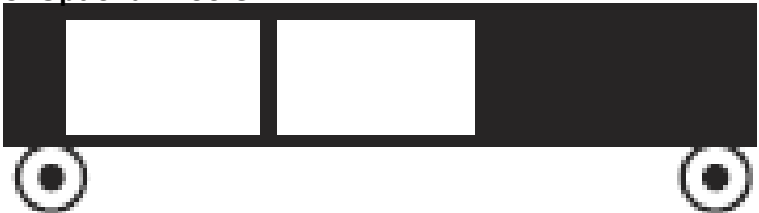
8. Standard Legs with Casters



Dimensions:

- One Deck:** 33" H (838mm) x 73"W (1854mm) x 37 1/2" D (952mm)
- Two Deck:** 24" H (610mm) x 73"W (1854mm) x 37 1/2" D (952mm)
- Three Deck:** 21" H (533mm) x 73"W (1854mm) x 37 1/2" D (952mm)
- Four Deck:** 9" H (227mm) x 73"W (1854mm) x 37 1/2" D (952mm)

9. Optional Proofer



Standard Proofer Dimensions (For 1 - 2 Chambers):

32 1/8" H (817mm) x 73"W (1854mm) x 37 1/2" D (953mm)

Shipping Weight: 700 lbs (318 kg)

Low Profile Proofer Dimensions (For 3 Chambers):

24 5/8" H (651mm) x 73"W (1854mm) x 37 1/2" D (953mm)

Shipping Weight: 700 lbs (318 kg)

TOTAL ARTISAN DIMENSIONS: (Height) _____ x (Width) _____ x (Depth) _____



5600 13th Street
 Menominee, MI 49858
 sales@nu-vu.com
 (800) 338-9886 Toll Free
 (906) 843-4401 Phone
 (906) 863-5889 Fax
 www.doyon.qc.ca

**SPECIFICATIONS SUBJECT TO CHANGE WITHOUT NOTICE
 KCL & REVIT DRAWINGS UPON REQUEST**